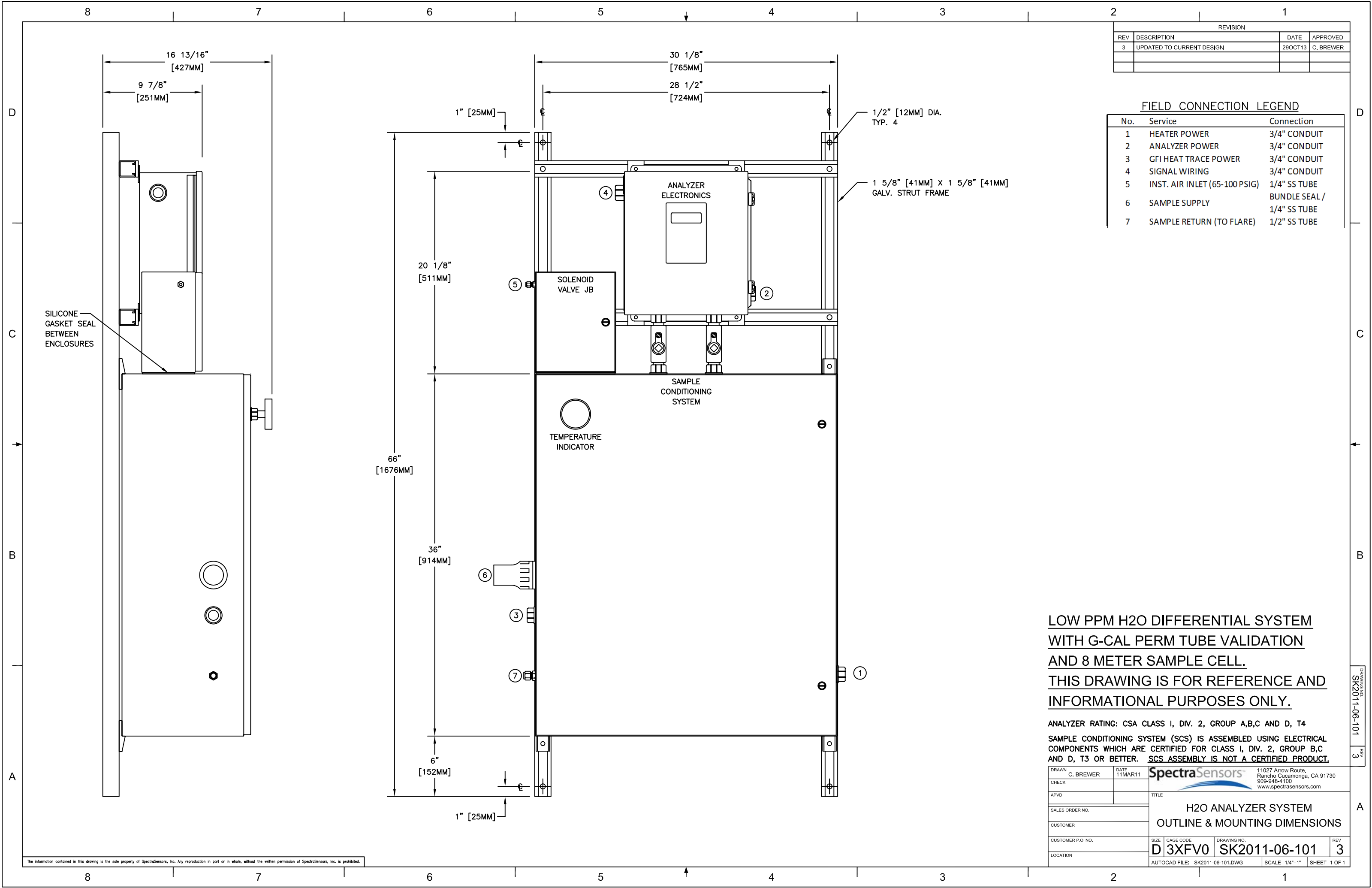


REVISION			
REV	DESCRIPTION	DATE	APPROVED
3	UPDATED TO CURRENT DESIGN	29OCT13	C. BREWER

FIELD CONNECTION LEGEND

No.	Service	Connection
1	HEATER POWER	3/4" CONDUIT
2	ANALYZER POWER	3/4" CONDUIT
3	GFI HEAT TRACE POWER	3/4" CONDUIT
4	SIGNAL WIRING	3/4" CONDUIT
5	INST. AIR INLET (65-100 PSIG)	1/4" SS TUBE
6	SAMPLE SUPPLY	BUNDLE SEAL / 1/4" SS TUBE
7	SAMPLE RETURN (TO FLARE)	1/2" SS TUBE



**LOW PPM H2O DIFFERENTIAL SYSTEM
WITH G-CAL PERM TUBE VALIDATION
AND 8 METER SAMPLE CELL.
THIS DRAWING IS FOR REFERENCE AND
INFORMATIONAL PURPOSES ONLY.**

ANALYZER RATING: CSA CLASS I, DIV. 2, GROUP A,B,C AND D, T4
SAMPLE CONDITIONING SYSTEM (SCS) IS ASSEMBLED USING ELECTRICAL COMPONENTS WHICH ARE CERTIFIED FOR CLASS I, DIV. 2, GROUP B,C AND D, T3 OR BETTER. **SCS ASSEMBLY IS NOT A CERTIFIED PRODUCT.**

DRAWN	C. BREWER	DATE	11MAR11	 11027 Arrow Route, Rancho Cucamonga, CA 91730 909-949-4100 www.spectrasensors.com
CHECK				
APVD		TITLE	H2O ANALYZER SYSTEM OUTLINE & MOUNTING DIMENSIONS	
SALES ORDER NO.		CUSTOMER		
CUSTOMER P.O. NO.		SIZE	CAGE CODE	DRAWING NO.
LOCATION		D 3XFV0		SK2011-06-101
		AUTOCAD FILE:	SK2011-06-101.DWG	SCALE 1/4"=1"
				REV 3 SHEET 1 OF 1

The information contained in this drawing is the sole property of SpectraSensors, Inc. Any reproduction in part or in whole, without the written permission of SpectraSensors, Inc. is prohibited.

DRAWING NO. SK2011-06-101 REV. 3