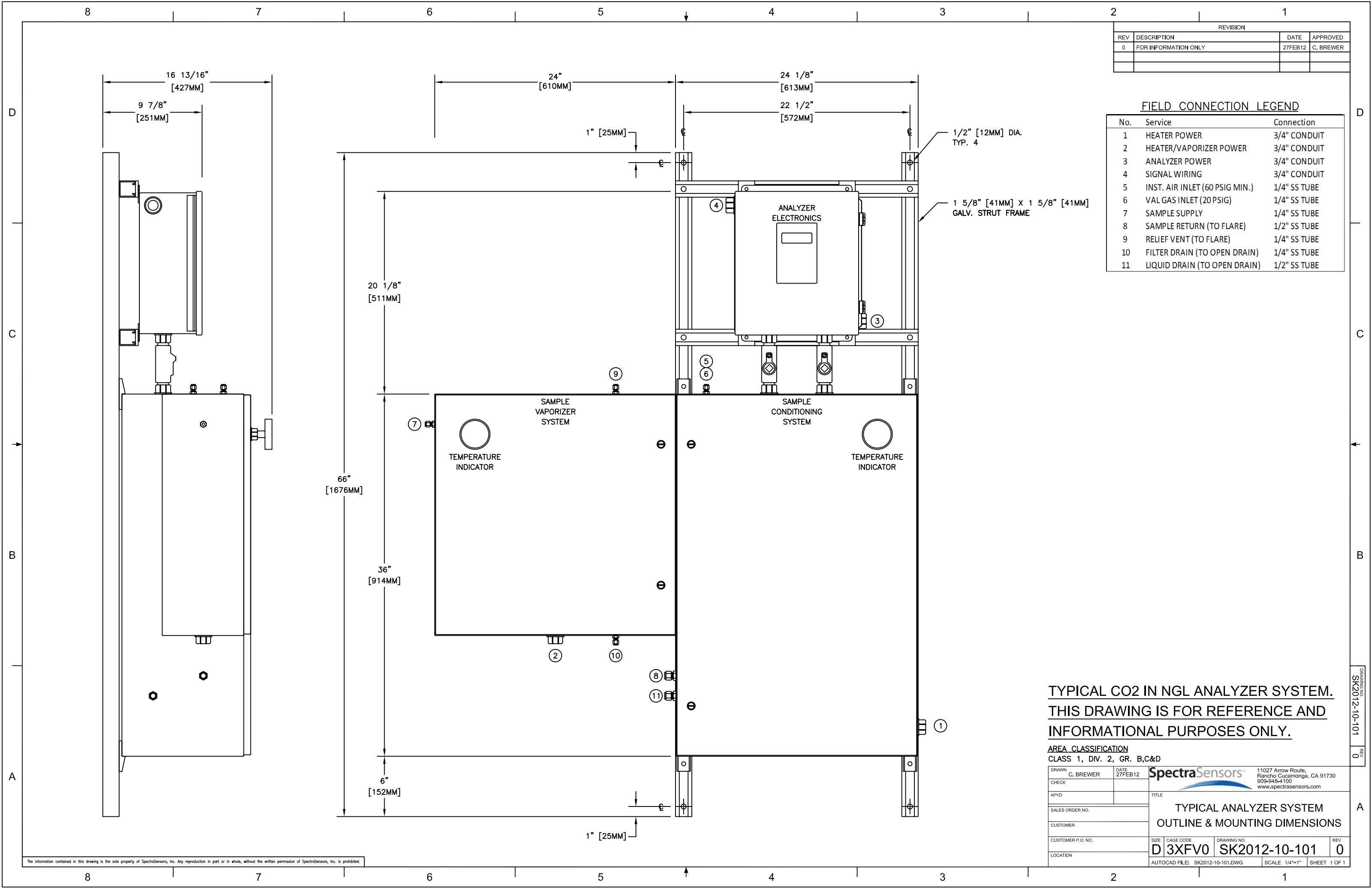


REVISION			
REV	DESCRIPTION	DATE	APPROVED
0	FOR INFORMATION ONLY	27FEB12	C. BREWER

FIELD CONNECTION LEGEND

No.	Service	Connection
1	HEATER POWER	3/4" CONDUIT
2	HEATER/VAPORIZER POWER	3/4" CONDUIT
3	ANALYZER POWER	3/4" CONDUIT
4	SIGNAL WIRING	3/4" CONDUIT
5	INST. AIR INLET (60 PSIG MIN.)	1/4" SS TUBE
6	VAL GAS INLET (20 PSIG)	1/4" SS TUBE
7	SAMPLE SUPPLY	1/4" SS TUBE
8	SAMPLE RETURN (TO FLARE)	1/2" SS TUBE
9	RELIEF VENT (TO FLARE)	1/4" SS TUBE
10	FILTER DRAIN (TO OPEN DRAIN)	1/4" SS TUBE
11	LIQUID DRAIN (TO OPEN DRAIN)	1/2" SS TUBE



**TYPICAL CO2 IN NGL ANALYZER SYSTEM.
THIS DRAWING IS FOR REFERENCE AND
INFORMATIONAL PURPOSES ONLY.**

AREA CLASSIFICATION
CLASS 1, DIV. 2, GR. B,C&D

DRAWN C. BREWER	DATE 27FEB12		11027 Arrow Route, Rancho Cucamonga, CA 91730 909-948-4100 www.spectrasensors.com	
CHECK				
APVD		TITLE		
SALES ORDER NO.		TYPICAL ANALYZER SYSTEM OUTLINE & MOUNTING DIMENSIONS		
CUSTOMER				
CUSTOMER P.O. NO.	SIZE D	CAGE CODE 3XFV0	DRAWING NO. SK2012-10-101	REV 0
LOCATION	AUTOCAD FILE: SK2012-10-101.DWG		SCALE: 1/4"=1"	SHEET 1 OF 1

The information contained in this drawing is the sole property of SpectraSensors, Inc. Any reproduction in part or in whole, without the written permission of SpectraSensors, Inc. is prohibited.

DRAWING NO. SK2012-10-101 REV. 0