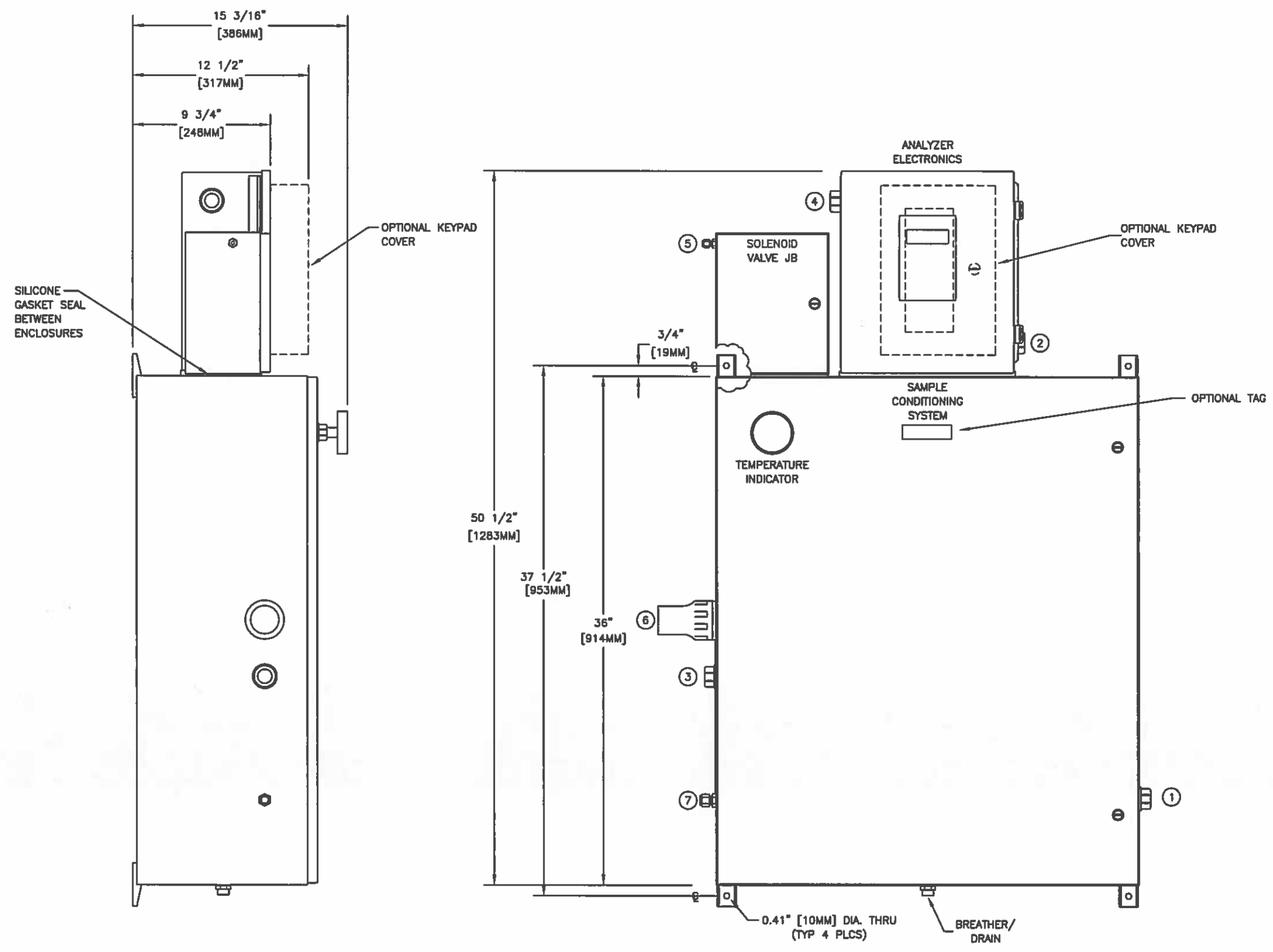


REVISION			
REV	DESCRIPTION	DATE	APPROVED
A	INITIAL RELEASE - EO15769	02JUL14	C BREWER
B	REVISED PER ECR16981	02FEB17	B KING
C	REVISED PER ECR17363	09JAN18	B KING

FIELD CONNECTION LEGEND

NO.	SERVICE	CONNECTION
1	HEATER POWER	3/4" CONDUIT
2	ANALYZER POWER	3/4" CONDUIT
3	GFI HEAT TRACE POWER	3/4" CONDUIT
4	SIGNAL WIRING	3/4" CONDUIT
5	INST AIR INLET (65-80 PSIG)	1/4" SS TUBE
6	SAMPLE SUPPLY	BUNDLE SEAL/ 1/4" SS TUBE
7	SAMPLE RETURN	1/2" SS TUBE



ANALYZER RATING:
CSA CLASS I, DIV. 2, GROUP A,B,C AND D, T3C, TYPE 4X, IP66.

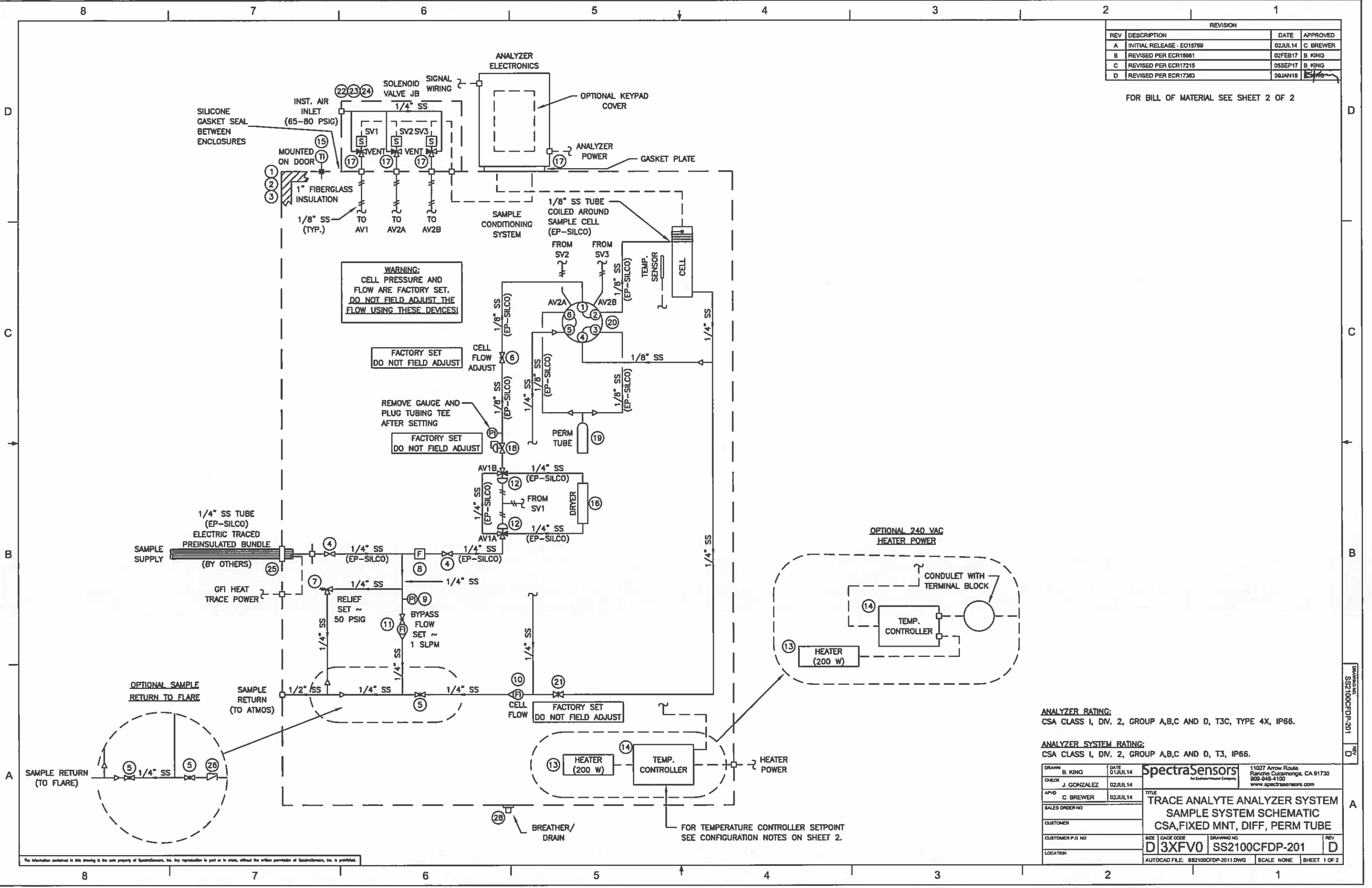
ANALYZER SYSTEM RATING:
CSA CLASS I, DIV. 2, GROUP A,B,C AND D, T3, IP66.

DRAWN: B. KING CHECK: J. GONZALEZ APVD: C. BREWER SALES ORDER NO. CUSTOMER CUSTOMER P.O. NO. LOCATION	DATE: 01JUL14 02JUL14 02JUL14	SpectraSensors <small>An Olin Corporation Company</small> 11027 Arrow Route, Rancho Cucamonga, CA 91730 909-948-4100 www.spectrasensors.com	TITLE: TRACE ANALYTE ANALYZER SYSTEM OUTLINE & MOUNTING DIMENSIONS CSA, FIXED MNT, DIFF, PERM TUBE
SIZE: D DATE CODE: 3XFV0 AUTOCAD FILE: SS2100CFDP-101.DWG	DRAWING NO: SS2100CFDP-101	SCALE: 14"=1' SHEET: 1 OF 1	REV: C

The information contained in this drawing is the sole property of SpectraSensors, Inc. Any reproduction in part or in whole, without the written permission of SpectraSensors, Inc. is prohibited.

REVISION			
REV	DESCRIPTION	DATE	APPROVED
A	INITIAL RELEASE - E015769	02JUL14	C BREWER
B	REVISED PER ECR18981	02FEB17	B KING
C	REVISED PER ECR17215	05SEP17	B KING
D	REVISED PER ECR17383	09JAN18	B KING

FOR BILL OF MATERIAL SEE SHEET 2 OF 2



ANALYZER RATING:
CSA CLASS I, DIV. 2, GROUP A,B,C AND D, T3C, TYPE 4X, IP66.

ANALYZER SYSTEM RATING:
CSA CLASS I, DIV. 2, GROUP A,B,C AND D, T3, IP66.

DRAWN B. KING	DATE 01JUL14	SpectraSensors <small>An Endress+Hauser Company</small>		11027 Arrow Route Rancho Cucamonga, CA 91730 909-948-4100 www.spectrasensors.com
CHECK J. GONZALEZ	DATE 02JUL14	TITLE TRACE ANALYTE ANALYZER SYSTEM SAMPLE SYSTEM SCHEMATIC CSA, FIXED MNT, DIFF, PERM TUBE		
APVD C. BREWER	DATE 02JUL14	SALES ORDER NO.		
CUSTOMER		CUSTOMER P.O. NO.		
LOCATION		SIZE D	GAUGE CODE 3XFV0	DRAWING NO. SS2100CFDP-201
AUTOCAD FILE: SS2100CFDP-201.DWG		SCALE: NONE	REV D	
		SHEET 1 OF 2		

The information contained in this drawing is the sole property of SpectraSensors, Inc. Any reproduction in part or in whole, without the written permission of SpectraSensors, Inc. is prohibited.

SOV VOLTAGE
BASED ON POWER
SUPPLIED TO
ANALYZER ELETRONICS

SEE CONFIGURATION NOTES

BILL OF MATERIALS

ITEM QTY DESCRIPTION MANUFACTURER PART NO. SSI PART NO.

AIR ACTUATED VALVE DIFFERENTIAL/1-PT AIR ACTUATED VALVE VALIDATION (50°C AMBIENT)
(SEE SHT 1)

FOR -1X1X0-4XXXXXX	17	3	SOL. VALVE (3/2 WAY), 120 VAC, 1/8" FNPT (SS)	BURKERT	98124074	6131401004
FOR -2X1X0-4XXXXXX	17	3	SOL. VALVE (3/2 WAY), 240 VAC, 1/8" FNPT (SS)	BURKERT	98123905	6131401003
FOR -3X1X0-4XXXXXX	17	3	SOL. VALVE (3/2 WAY), 24 VDC, 1/8" FNPT (SS)	BURKERT	456658	6131401002

AIR ACTUATED VALVE DIFFERENTIAL/1-PT AIR ACTUATED VALVE VALIDATION (60°C AMBIENT)
(SEE SHT 1)

FOR -1X2X0-4XXXXXX	17	3	SOL. VALVE (3/2 WAY), 120 VAC, 1/8" FNPT (SS)	ASCO	EFHB8320G041-120/60VAC	6100002778
FOR -2X2X0-4XXXXXX	17	3	SOL. VALVE (3/2 WAY), 240 VAC, 1/8" FNPT (SS)	ASCO	EFHT8320G045-240/60VAC	6100002779
FOR -3X2X0-4XXXXXX	17	3	SOL. VALVE (3/2 WAY), 24 VDC, 1/8" FNPT (SS)	ASCO	EV8314G301	6100002777

REVISION			
REV	DESCRIPTION	DATE	APPROVED
A	INITIAL RELEASE - E015769	02JUL14	C. BREWER
B	REVISED PER ECR16981	02FEB17	B. KING
C	REVISED PER ECR17215	05SEP17	B. KING
D	REVISED PER ECR17363	09JAN18	B. KING

SEE CONFIGURATION NOTES

BILL OF MATERIALS

ITEM QTY DESCRIPTION MANUFACTURER PART NO. SSI PART NO.

FOR -41XXXXX	1	1	ENCLOSURE (NEMA 4X, SS), 36"X30"X12"	HOFFMAN	CSD363012SS	14005363
FOR -42XXXXX	2	1				
	3	1				
FOR -43XXXXX	1	1	ENCLOSURE (NEMA 4X, 316LSS), 36"X30"X12"	HOFFMAN	CSD363012SS6	1400002168
FOR -44XXXXX	2	1	MOUNTING BRACKET KIT (SS)	HOFFMAN	CMFKSS	1400400001
FOR -45XXXXX	3	1	MOUNTING PANEL (PAINTED STEEL), 34.2"X28.2"	HOFFMAN	CP3630	1400436300
FOR -46XXXXX	4	2	DIAPHRAGM VALVE, 1/4" TF (SS)	SWAGELOK	SS-DLS4	6100002066
FOR -4XX1XXX	5	1				
FOR -4XX2XXX	5	2	BALL VALVE, 1/4" TF (SS)	SWAGELOK	SS-42GS4	6130304254
	6	1	NEEDLE VALVE, 1/8" TF (SS/SULF)	SPECTRASENSORS	6200002498	6200002498
			RELIEF VALVE, 10-250PSIG, 1/4" TF (SS-MTR)	DK TECH	V63-D-4T-L-S	6100002638
			FILTER (TEE-TYPE), 7 MICRON, 1/4" TF (SS/SULF)	SPECTRASENSORS	6200002203	6200002203
	9	1	PRESS. GAUGE (1.5"), 60 PSIG, 1/8" MNPT (SS)	MCDANIEL	SCL	6200000006
FOR -4X1XXXX			FLOWMETER (NO VALVE), 6 SLPM, 1/4" FNPT (SS)	KING	74C123G081523830	6100002181
			FLOWMETER (W/VALVE), 2 SLPM, 1/4" FNPT (SS)	KING	74C123G081123810	6134100274
FOR -4X2XXXX	10	1	FLOWMETER (ARM,NO VLV),6 SLPM,1/4"FNPT (SS)	KING	7101063005A2	6100002410
	11	1	FLOWMETER (ARM, W/VLV),2.6 SLPM,1/4"FNPT (SS)	KING	7101361003A2	6100002373
			AIR-OP VALVE (3-WAY), 1/4" TF (SS)	SWAGELOK	SS-4BY-W4-1C	6100002287
120 VAC, 50° SETPOINT	FOR -41XXXXX		HEATER (DIV. 1), 200 W, 120 VAC	INTERTEC	CPA-200T3100-120V	1400402310
	FOR -43XXXXX		TEMP. CONTROLLER (DIV. 1), SET AT 50°C, 120 VAC	INTERTEC	TC CD E1 S J-50°C	5300002004
	FOR -45XXXXX				HFCI-SC0002	
120 VAC, 60° SETPOINT	FOR -41XXXXX	13	HEATER (DIV. 1), 200 W, 120 VAC	INTERTEC	CPA200T3100-120V	1400402310
	FOR -43XXXXX	14	TEMP. CONTROLLER (DIV. 1), SET AT 60°C, 120 VAC	INTERTEC	TC CD E1 S J-60°C	5300002005
	FOR -45XXXXX				HFCI-SC0004	
240 VAC, 50° SETPOINT	FOR -42XXXXX	13	HEATER (IECEX/ATEX/CSA), 200 W, 240 VAC	INTERTEC	CP VARITHERM	EX5300000008
	FOR -44XXXXX	14	TEMP. CONTROLLER (Z1/D2), SMART, 240 VAC	INTERTEC	DPA200T340BI-230V	EX5300000005
	FOR -46XXXXX				TC ATEX D E 01 SJ	EX5300000005
					HFCI-S-0015	
240 VAC, 60° SETPOINT	FOR -42XXXXX	13	HEATER (IECEX/ATEX/CSA), 200 W, 240 VAC	INTERTEC	CP VARITHERM	EX5300000008
	FOR -44XXXXX	14	TEMP. CONTROLLER (DIV 1), DIG, 60°C, 240 VAC	INTERTEC	DPA200T340BI-230V	EX5300000005
	FOR -46XXXXX				TC CD E1 S J-60°C	5300002034
					HFCI-SC0092	
		15	SAMPLE DRYER, 1/4" VCR (SS)	PT (SS) REOTEMP NUPURE	AA-040-1-D43-TG	6101811014
			1 PRESS. REGULATOR, 25 PSIG,1/4"FNPT(SS/SN2000)	NEON CONTROLS	10-221B2-2AF2-SI	6200002582
		19	1 PERM TUBE, H2O, 2038NG/M AT 50C, 1/4" VCR	VICI	GC23-7322-C50-VCR	1300002289
			1 VALVE, ROTARY 6 WAY, 316 SS, 1/8" PORTS	VALCO	AL6UWE	6100002407
		21	1 METERING VALVE, 1/4" TF (316SS)	SWAGELOK	SS-1VS4	6130301VS4
FOR -41XXXXX			ENCLOSURE (NEMA 4X, SS), 10"X8"X6"	HOFFMAN	LHC252015SS	1400002331
FOR -42XXXXX						
FOR -43XXXXX						
FOR -44XXXXX						
FOR -45XXXXX						
FOR -46XXXXX						
	22	1	ENCLOSURE (NEMA 4X, 316LSS), 10"X8"X6"	HOFFMAN	LHC252015SS6	1400002340
	23	1	MOUNTING PANEL (PAINTED STEEL), 9.09"X7.13"	HOFFMAN	LP2520	1400002332
	24	1	GASKET, SOLENOID VALVE JUNCTION BOX ENCL.	SPECTRASENSORS	1300002296	1300002296
	25	1	TUBE BUNDLE SHRINK SLEEVE, 2.10" ID	NU-TECH	NUS-4X	6100002161
FOR -4XX2XXX	26	1	CHECK VALVE, 1/3 PSI, 1/4" TF (SS)	SWAGELOK	SS-4C-1/3	6130504C13
	27	1	GASKET, PLATE, SS2100	SPECTRASENSORS	0900002195	0900002195
	28	1	BREATHDR DRAIN, TYPE BE,M25,ZONE1/DIV1	HLS	BE.25.S.NT	EX1300000036

CONFIGURATION NOTES:

1. DIGITS IN NUMBER STRING SHOWN CORRESPOND TO OPTIONS SELECTED DURING SYSTEM CONFIGURATION.

SS2100-XXXXXX-XXXX-4XXXXXX

SAMPLE CONDITIONING SYSTEM OPTIONS


2. TEMPERATURE CONTROLLER SETPOINT DETERMINED BY OPTION SELECTED IN CONFIGURATION STRING SHOWN BELOW.

SS2100-XXXXXX-XXXX-4XXXXXX

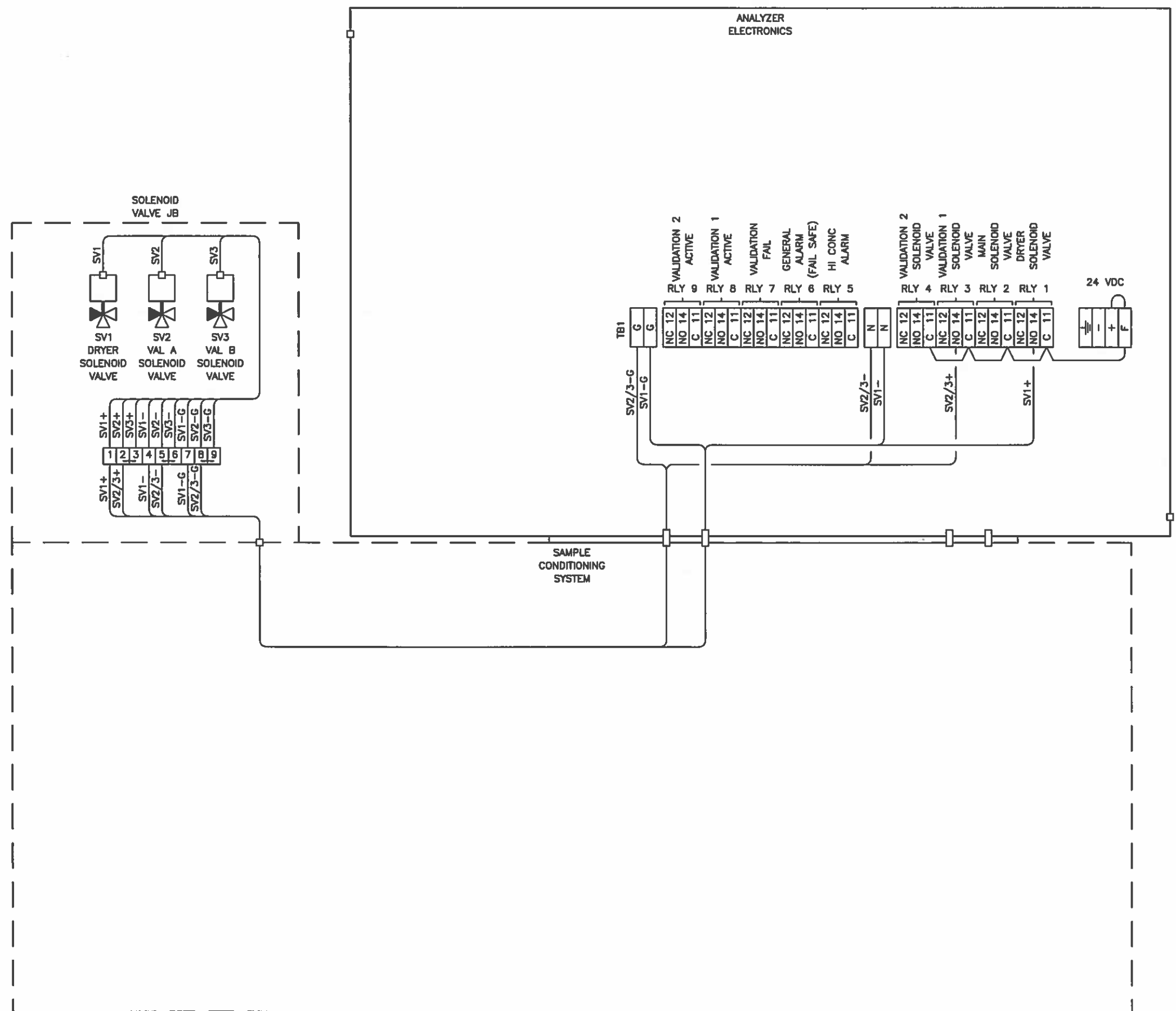
AMBIENT TEMPERATURE OPTION
1 = 50° C TEMPERATURE CONTROLLER SETPOINT
2 = 60° C TEMPERATURE CONTROLLER SETPOINT

ANALYZER RATING:
CSA CLASS I, DIV. 2, GROUP A,B,C AND D, T3C, TYPE 4X, IP66.

ANALYZER SYSTEM RATING:
CSA CLASS I, DIV. 2, GROUP A,B,C AND D, T3, IP66.

DRAWN	B. KING	DATE	01JUL14	 11027 Arrow Route, Rancho Cucamonga, CA 91730 909-948-4100 www.spectrasensors.com
CHECK	J. GONZALEZ	DATE	02JUL14	
APVD	C. BREWER	DATE	02JUL14	
SALES ORDER NO.				TITLE
CUSTOMER				TRACE ANALYTE ANALYZER SYSTEM
CUSTOMER P.O. NO.				SAMPLE SYSTEM SCHEMATIC
LOCATION				CSA, FIXED MNT, DIFF, PERM TUBE
SIZE	CAGE CODE	DRAWING NO.	REV.	
D	3XFFV0	SS2100CFDP-201	D	
AUTOCAD FILE: SS2100CFDP-201.DWG				SCALE NONE SHEET 2 OF 2

REVISION			
REV	DESCRIPTION	DATE	APPROVED
A	INITIAL RELEASE: EO15759	02JUL14	C. BREWER
B	ECR 16324: REVISE ZONE D6 SHEET 1	29SEP15	D. BANNING
C	REVISED PER ECR16961	02FEB17	C. BREWER



CONFIGURATION NOTES:

- TEMPERATURE CONTROLLER SETPOINT DETERMINED BY OPTION SELECTED IN CONFIGURATION STRING SHOWN BELOW.

SS2100-XXXXXX-XXXXX-4XXXXXX

- AMBIENT TEMPERATURE OPTION
- 1 = 50° C TEMPERATURE CONTROLLER SETPOINT
 - 2 = 60° C TEMPERATURE CONTROLLER SETPOINT

ANALYZER RATING:

CSA CLASS I, DIV. 2, GROUP A,B,C AND D, T3C, TYPE 4X, IP66.

ANALYZER SYSTEM RATING:

CSA CLASS I, DIV. 2, GROUP A,B,C AND D, T3, IP66.

DRAWN B. KING	DATE 01JUL14	SpectraSensors An Endress+Hauser Company	11027 Arrow Route Rancho Cucamonga, CA 91730 909-946-4100 www.spectrasensors.com
CHECK J. GONZALEZ	DATE 02JUL14		
APVD C. BREWER	DATE 02JUL14	TITLE TRACE ANALYTE ANALYZER SYSTEM POWER & SIGNAL WIRING DIAGRAM CSA, FIXED MNT, DIFF, PERM TUBE	
SALES ORDER NO.		SIZE D	CAZE CODE 3XFV0
CUSTOMER		DRAWING NO. SS2100CFDP-301	REV C
CUSTOMER P.O. NO.		AUTOCAD FILE: 852100CFDP-3012.DWG	SCALE: NONE
LOCATION			SHEET 2 OF 2